



CONTINEST®
Space to go

SUSTAINABILITY | DEPLOYABILITY | COMPETITIVENESS



CONTINEST
THE LEADING
FOLDABLE
CONTAINER
SOLUTION

MOBILE | INNOVATIVE | SAFE

CATALOG 2021





CONTENTS

ABOUT US	04
MARKET DEVELOPMENT	06
PRODUCT DEVELOPMENT	08
CONTINEST	
Innovation in Deployable Infrastructure Solutions	10
BASE PRODUCTS	
CN10, CN20	12
SPECIALIZED SOLUTIONS	
CN Hybrid	14
Deployable military shooting range.....	16
CN BW (Ballistic Wall) R&D.....	19
CN Sanitary (WetCell)	20
CN20 RW	22
CN CP – Checkpoint	24
CN20 UT – Urban Trainer	26
CN CEC – Continest Expeditionary Camp	27
CN20 BH – Black Hole R&D	28
Continest innovative container solutions	29



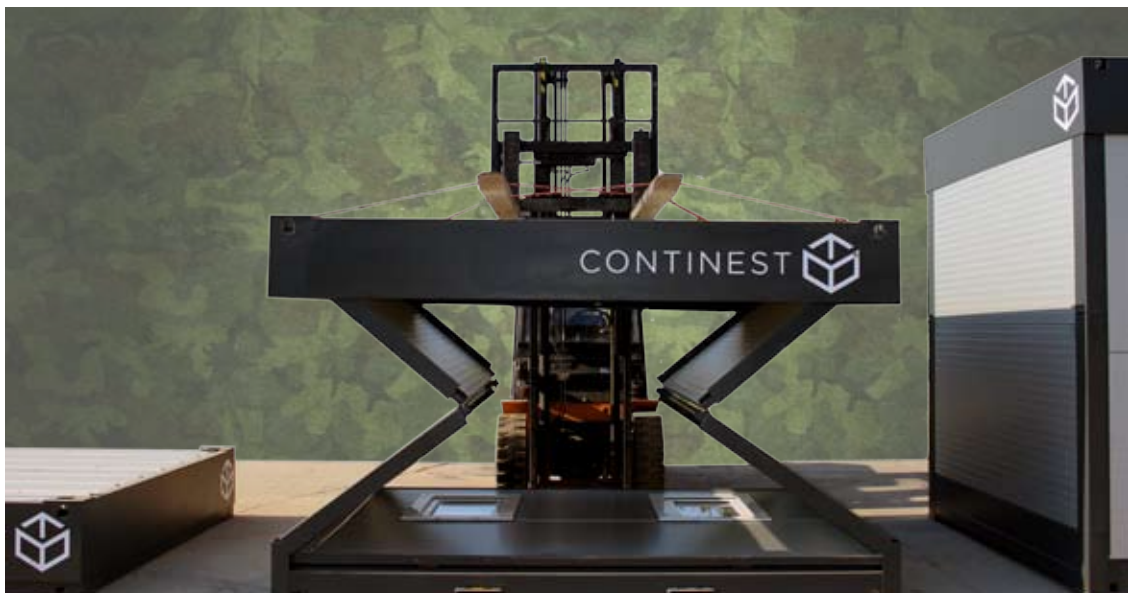


CONTINEST® | SPACE TO GO



ABOUT US

SUSTAINABLE MOBILITY AND INTEROPERABILITY OF DEPLOYABLE INFRASTRUCTURE SOLUTIONS



Continest is an innovative market-leading foldable container manufacturer. The containers are uniquely developed for easy and quick set up and transport thus being environmentally friendly and sustainable. The solution offers an 80% cost cut on logistic and storage costs, and a similar reduction of CO² and GHG emissions. Continest container solutions are specially developed for various purposes in the fields of defence, medical, events (cultural & sports) and urban mobile platform needs. Continest started its activity at the end of 2016 with buying the IP of the 20' foldable container from Rob van den Berg, Dutch mechanical engineer. The first prototype was built in Q1 2017, followed by serial production. In 2018 we set up our first international branch and serviced international customers around Europe. The same year our CN10 Solar Unit (CN10 SU) prototype was launched at the NATO ENSEC COE Industry Day in Vilnius. In January 2019 the Field Evaluation of the CN10 SU started with the Main Support Logistic Battalion of the Lithuanian Defence Forces. In August 2019 the company received EUR 4 M. VC funding from a Hungarian VC fund (currently minority share holder), the SPV created for this investment is the current operational platform of the company.



CONTINEST® | SPACE TO GO

Continest is present with local distributors in the UK & Ireland, Germany, Netherlands, Finland, Switzerland, Israel, UAE and KSA. The company is present in Canada, and it prepares its market entry in the USA.

Continest in cooperation with its strategical suppliers and partners started the development of the most advanced mobile temporary infrastructure solution, which can offer efficient and sustainable mobility, safety and autonomous operation for the specialists in the field.

MARKET DEVELOPMENT MILESTONES 2020-2021

- ▶ on August 28th 2020 Continest received its Defence Technology License
- ▶ on September 25th 2020 we signed a R&D agreement with the Hungarian Defence Forces for the development of a mobile, modular container based military grade shooting range.
- ▶ on October 12th 2020 Continest received it's NCAGE code: 2054V
- ▶ NATO Stock Number allocation for CN10 and CN20
- ▶ During the Brave Warrior 2020 exercise we launched the CN20 Hybrid prototype. This new unit was developed together with Axsol GmbH and it complements the foldable container with autonomous energy system (energy storage/production both from renewable as well fuel cell sources).
- ▶ Continest & Axsol, as part of a Canadian consortium are in the prototyping phase of a RTC (Relocatable Temporary Camp) for the Department of National Defence of Canada (IDEaS).
- ▶ Continest in cooperation with Dynasystems (UK) developed the concept of a highly mobile expeditionary camp that is easily relocatable and provide protection against STANAG 2280 Category C4 (roof) and A3 (side) threat.
- ▶ The (re)deployable, modular milspec shooting range developed for HDF was officially launched in August 2021 during the International Air Show and Military Display in Kecskemét. The process of standardization of this new training system was initiated by HDF. This is being followed by the registration of the shooting range in the NSPA list with its unique NATO Stock Number.

The mobile shooting range system was developed within the framework of a joint research and development project with the Institute of Modernization of the Hungarian Defence Forces in order to create a safe environment for conducting shooting exercises in locations that are not designated for such activities. This is a relevant characteristic both during the recruiting process as well for professional personel, as well for mission support.

During the development, we created an armoured and soundproof shooting range based on a new foldable solution specially developed by Continest for this project our foldable container technology, suitable for live fire exercises with in various locations, also outside of military facilities.



CONTINEST® | SPACE TO GO



MARKET DEVELOPMENT

After the first year on the event market Continest started developing its defence and first responder network both in Europe as well overseas.



- ▶ **November 2018 NATO ENSEC COE Vilnius, Lithuania Industry Day**
– exhibition of the CN10 SU, meetings followed by field evaluation and exercises (with US participation)

- ▶ **January 2019 – Field evaluation of the CN10**
Solar Unit with the Main Support Logistic Battalion of the Lithuania Defence Forces



- ▶ **June 2019 75th DD Anniversary, UTAH Beach, Normandy**
– temporary accomodation for US Air Force staff

- ▶ **January 2020 Israel**
Continest delivered its first units and started exploring cooperation and product development opportunities with different players of the local security market.

- ▶ **March 2020 Dutch Army & Red Cross exercise in NL**
(101 MILENG Battalion, Wezep)

- ▶ **2019 Continest is registered in the NSPA database**





CONTINEST® | SPACE TO GO



► **April 2020 Canada, DND**

– Continest was selected for the Pop Up City R&D project of the Canadian Armed Forces.

► **September 2020 R&D project with the HU Defence Forces Modernisation Institute**

(CN Fold & Shoot) First contract with the HUN ARMY Modernization Institute. Signs an R&D agreement with the Hungarian Defence Forces for a mobile range, modular container based military shooting range.

► **September 2020 Brave Warrior multinational exercise, HU (C2)**

Filed testing CN Hybrid "energy container" and multiple CN20 MILSPEC units during Brave Warrior multinational exercise. During the Brave Warrior 2020 exercise we launched the CN20 Hybrid prototype. This new unit was developed together with Axsol GmbH and it complements the foldable container with autonomous energy system (energy storage/production both from renewable as well fuel cell sources).

► **March 2021** - Continest delivered its first CN Hybrid unit to the French Armed Forces for field evaluation

► **June 2021** - Continest sold its first CN Hybrid to Bachman RDS (LBD Group), which was displayed at SOFINS.

► **August 2021 Kecskemét Air Show and Military Display**

The (re)deployable shooting range developed for HDF was officially launched.



CONTINEST® | SPACE TO GO



PRODUCT DEVELOPMENT

The base products of ContiNest are the CN10 (10') and CN20 (20') foldable containers. Driven by both customer demand and market development strategy a range of new products, applications and accessories have been developed and are under development:



► CN BW (Ballistic Wall) R&D

– a custom made add-on frame & panel system that provides ballistic protection, and can be installed on already operational units (currently up to NIJ 3+ protection level)



► CN Hybrid – 20' foldable

container with integrated energy production and storage features from grid + solar PV + generator.

This system (without the foldable container) is currently used by Bundeswehr SOF. By integrating a smart power management system the diesel consumption of the generator is 50%-70% lower, while its maintenance requirement drops with 80%.



► CN Sanitary (WetCell) – plug & play deployable sanitary unit



CONTINVEST® | SPACE TO GO



► **CN F&S (Fold & Shoot)**

– a military grade, (re)deployable shooting range that offers mobility and safety at the same time. The shooting range can be operated in areas that are not designated for live fire exercises, without the need to restrict the normal operation (even in civilian surroundings).

► **CN CEC (Continvest Expeditionary Camp) R&D**

(Mobility, safety and energy efficiency that is needed for any military unit that has to perform activities in distant and hostile environment.) developed in cooperation with Dynasystem (UK).

► **Continued medical unit was established**

by Continvest Technologies Plc. in 2020 with the aim to fulfill the market need of mobile medical infrastructure.



CONTINEC® | SPACE TO GO



CONTINEC

INNOVATION IN DEPLOYABLE INFRASTRUCTURE SOLUTIONS



Continec foldable containers generate 80% savings on logistical costs, environmental impact and infrastructure requirements such as trucks, drivers, fuel and other associated requirements. 20 units of CN10 or 10 units of CN20 folded containers can be transported on a standard trailer.

Both base units were developed with the aim to be compatible with the most widely used machines and equipments: forklifts, cranes, wheel loader, telehandlers, side loader and hook lifts. The CN20 unit is also certified by the HDF being compatible with its MAN HAMMAR sideloader system.



CONTINEST® | SPACE TO GO

Besides its wide compatibility the other priority was operational safety. The system is developed with multiple safety layers, that prevent unintentional collapsing of the units, even when they are partially opened or stacked. The patented hinge mechanism is the key component responsible for the safe and quick set-up and tear down.

The units are "plug&play", providing efficient deployment and relocation options to the end user. As the footprint of the units is identical with the 10' and 20' ISO containers the units can be shipped by rail, sea and air as well.





CONTINEST® | SPACE TO GO



BASE PRODUCTS

The base products of Continest are the CN10 (10') and CN20 (20') foldable containers. Driven by both customer demand and market development strategy a range of new products, applications and accessories have been developed and are under development:



CN10

Size (L x W x H)

- ▶ Closed: 3000 mm x 2440 mm x 490 mm
- ▶ Open: 3000 mm x 2440 mm x 2610 mm
- ▶ Inner height: 2420 mm
- ▶ Inner width: 2260 mm
- ▶ Inner length: 2870 mm



Weight:

- ▶ 900 kg (1 truck = 20 units)



CN20

Size (L x W x H):

- ▶ Closed: 6058 mm x 2440 mm x 555 mm
- ▶ Open: 6058 mm x 2440 mm x 2776 mm
- ▶ Inner height: 2504 mm
- ▶ Inner width: 2315 mm
- ▶ Inner length: 5791 mm



Weight:

- ▶ 1870 kg (1 truck = 10 units)



CONTINEST® | SPACE TO GO





CONTINEST® | SPACE TO GO



SPECIALIZED SOLUTIONS

CN HYBRID

The CN Hybrid unit is the result of the cooperation of two market leaders from two industry sectors: innovative infrastructure solutions by Continvest (HU) and power storage and management by Axsol (D).

The concept of the unit is to provide the most efficient energy production and storage mix for deployed infrastructure systems regardless of the geographical and environmental conditions.

Due to the smart energy management system integrated in the CN20 unit, the built-in batteries, the solar PV array and the generator provide permanent and safe power generation while the fuel consumption of the generator is decreased with 50%-70% and its maintenance cycles with 80%. The fuel and maintenance savings, the autonomous operation combined with the logistical efficiency of the foldable units creates a unique solution for anyone operating in the field no matter where and when.

The key of the systems performance is the possibility of connecting several power sources with the help of a central inverter - "Victron Energy MultiPlus II 48V/5000/70, generating and storing energy the most efficient way.



CNHYBRID



CONTINEST® | SPACE TO GO



In addition to the main 3-phase 380V power supply, it is possible to provide the necessary power with four “LiFePO4” batteries with a capacity of 2,4 kWh each which were installed in the under the floor of the container between the forklift pockets in the bottom frame. Based on customer request the battery capacity can be scaled between 20 kWh and 50 kWh.

In addition, it is possible to mount solar panels on the roof and the side of the container, for which a “Victron Energy -” MPPT 150 / 70A MC4 ”solar inverter has been used. Solar panels power can be between 1,8 – 5,4 kWp. The solar PV array can be scaled up without limitations.

The external generator will start generating power automatically when the charge level of the batteries drop below a pre-set charge level. Due to the temporary usage of the generator both its fuel consumption as well maintenance are significantly decreased (50%-80%).



AXSOL

AXSOL (D) – the energy experts who are disrupting the way energy is harvested, stored and managed.



CONTINEST® | SPACE TO GO



DEPLOYABLE MILITARY SHOOTING RANGE

Foldable container technology

The mobile shooting range system was developed within the framework of a joint research and development project with the Institute of Modernization of the Hungarian Defence Forces in order to create dynamically relocatable, safe environment for conducting shooting exercises.

During the development, we created an armoured and soundproof shooting range based on a new foldable solution specially developed by Continest for this projects, suitable for live fire exercises with military steel core ammunition which is unique in the world.





CONTINEST® | SPACE TO GO

A UNIQUE MOBILE SHOOTING RANGE SYSTEM BASED ON FOLDABLE CONTAINER TECHNOLOGY



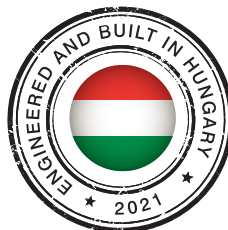
- ▶ Transportable with 3 semi-trailer trucks with a flatbed trailer or 5 pcs. 20-foot side-loading container trailers due. The standard shooting distance is 15 m which can be increased with 2,44 m by adding new Continvest to the folding modules.
- ▶ Can be relocated and fully operational within 12 hours!
- ▶ Thanks to its modular design, the shooting distance can be increased optionally. In its current configuration with 6 innovative foldable armoured and noise insulated modules it provides 15 m range for static shooting.
- ▶ Either 4 person static or a 1 person dynamic shooting exercises can be performed in the shooting range. The number of shooters can be increased to 5.
- ▶ The ballistic protection is resistance is ensured by the SSAB Armox 600T armour.
- ▶ All surfaces comply with VPAM ARP2006 level 7 protection. The complete small arm range of the Hungarian Armed Forces can be used in the shooting range with standard ammunition (except for armour piercing and tracer rounds) - 0,22 mm, 9 mm, 5.56 and 7.62 NATO caliber.
- ▶ The shooting range is armoured in a 360° manner and its internal surfaces are completely ricochet-proof, thus protecting those inside and outside the shooting range from injuries caused by negligent discharges.



CONTINEST® | SPACE TO GO



- ▶ The armour of the shooting range also prevents active shooters firing outwards. No projectile can leave the shooting range neither through the container connections nor the air-ducts, so the shooting range can be safely operated even in a populated area.
- ▶ Thanks to its unique sound-absorbing wall structure, specially designed to reduce the noise of shots, the in-use noise load of the shooting range 10 meters from the shooting range reaches a maximum of 50 to 70 decibels, which is lower than the average street noise, so it can be used from early morning until late evening without disturbing the surrounding population.
- ▶ The air conditioning container is a separate structural unit, which is a complex ventilation system built into a 20-foot container. It ensures the proper extraction of hazardous gases generated during shooting, the supply of fresh air and the heating and cooling of the shooting range.
- ▶ The shooting booth allows the command and control of a maximum 4 person shooting exercise. Also allows the control of the air conditioning, the light effects and provides safe storage for weapons and ammunition.
- ▶ The bullet trap made of 10mm ArmoX 600T plates and a ventilation unit is installed in the last 20 foot container.
- ▶ The bullet trap efficiently absorbs the energy of the impacting projectiles and directs them into trays that can be emptied without in the exposure of heavy metals.
- ▶ The bullet catcher of the shooting range was delivered by The ballistic protection system of the shooting range was developed in cooperation with SSAB, Linde and the Technical University of Budapest. All ballistic tests were executed and certified by HDF.



NATO Stock Number: VBÜ/HBI/38-29/2021



CONTINEST® | SPACE TO GO



CN BW (BALLISTIC WALL) – R&D

The BW can be customized to the standard size of both the CN10 and CN20 units. Standard frame height of the BW is 200 cm, which can be adjusted, depending on customer request.



The BW was developed with the aim to provide protection to the on field personnel, while optimizing weight, thickness and cost. The system can be implemented on site, on those sides of the units which are exposed to threat. Connection of the BW to the CN units is quick and simple.

BW3A (NIJ 0108.01-III A) - significantly lighter, thinner and more affordable solution:



Aramid test plate at different velocity. No penetration at 444 m/s

All plates and panels are EU & USA manufactured

Type	Weight [Kg/m ²]	Thickness [mm]	Max Dimension [mm]	Material	Protection Level	V ₅₀ FSP 17 gr [m/s] (STANAG 2920)	Final Use
LARS 80/F6	8,3	7	2200 x 1300	Aramid + Thermoplastic	NIJ 0108.01-III A	580	Spall Liner
LARS HPPE/20	20,0	22	1600 x 1000	UHMWPE	NIJ 0101.04-III +	900	Armouring Vehicles



CN SANITARY (WETCELL)

Designed and produced by MSS International, in close cooperation with Continest. The WETCELL is equipped with a regular flush toilet, a sink and a shower. Furthermore, the WETCELL comes with a heater for a nice and warm unit as well as with a tankless water heater to make sure that there is 24/7 warm and comfortable water available for the shower (and the sink).

The WETCELL can be connected to a foldable container from Continest, both the CN10 and CN20. Especially when CN10 or CN20 containers are interconnected the WETCELL is a perfect supplement to the CN10 and/or CN20. The WETCELL can be applied also as a stand-alone unit.

Measurements:

- ▶ Outside dimensions: 2440 x 1503 mm
- ▶ Inside dimensions: 2340 x 1403 mm, depending on the panels to be applied by customer wishes
- ▶ Weight: depending on the use of material: 1040 kg

Can be transported on a truck with 9 units and therefore suitable for approx.

500 – 800 people depending on circumstances and customers wishes.

Each WETCELL needs the following connections to operate:

- ▶ Water connection: $\frac{3}{4}$ GK connection, 3.5Bar;
- ▶ Power connection: 12kVa/380V/32Amp
This is due to the tankless water heater. A heater with a boiler can be applied and will use less power but does not perform as good as a tankless water heater. Depending on the customer wishes, this can be adjusted.
- ▶ Waste connection: 110 mm Ø (Camlock as an option). All connections are fitted inside the unit.

Water consumption:

Toilet, sink and shower use water but all are equipped with water-saving material. Depending on customer wishes, units can be equipped with vacuum systems, saving more water and preventing the production of wastewater.



CONTINEST® | SPACE TO GO



WETCELL

CONTINEST
WETCELL2IN1



CONTINEST® | SPACE TO GO



CN20 RW

THE NEXT INFRASTRUCTURE SOLUTION OF CONTINEST

The CN20 RW is based on the CN20 model.



Most important upgrades are:

- ▶ usage of **rockwool panels (RW)** with an A2-S1 D0 (non-combustible material, European Standard EN 13501-1)
- ▶ placement of the **fuse board at 200 cm height**,
- ▶ usage of energy efficient, dimmable **LED panels**
- ▶ two-pole **sockets with protective contact** (AC 16 A 250 V 50Hz) for unrestricted use secondary safety for the end user)

Size (L x W x H) ISO Standard:

- ▶ Closed: 6060 mm x 2440 mm x 540 mm
- ▶ Open: 6060 mm x 2440 mm x 2750 mm
- ▶ Inner length: 5830 mm
- ▶ Inner width: 2310 mm
- ▶ Inner height: 2470 mm

Weight:

- ▶ 2250 kg



CONTINEST® | SPACE TO GO



Electrical connection:

- ▶ 3 x double socket (NN) type F (CEE 7/3 - two-pole sockets with protective contact AC 16 A 250 V 50Hz) for unrestricted use.
- ▶ General lighting, switchable ON/OFF with an illuminance of 200 lux (reference height of illuminance: 0.75 m above ground) energy efficiency class: A++ in accordance with "Ecodesign Directive 2009/125/EC" (Regulation 874/2012/EU Annex VI). Dimmable LED panels of 300 X 1200mm
- ▶ Electrical switch box on a foldable panel at 2m above the floor level of the container
- ▶ Grounding.
- ▶ Durable rubber electrical cables.
- ▶ 32A 3 phase incoming and outgoing connection for further container electrical supply.



CONTINEST® | SPACE TO GO



CN CP – CHECKPOINT

Deployable multifunctional & modular solution.

Can be easily deployed and set up in any climate and risk environment.

The system can generate its own power need and provide the suitable protection level to different threat levels.

The fit out can be medical, civilian or any other function.

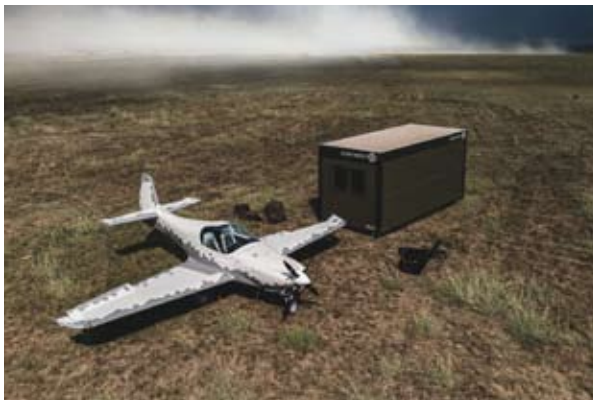
The units can be delivered fully equipped with surveillance systems on the checkpoint as well with perimeter protection systems. ting the production of wastewater.





CONTINEST® | SPACE TO GO

Migration, border violations and terrorism are today's accurate and pressing issues which need rapid and compact solutions. Fusion Sentinel in combination with Continest systems are such a package that allows quick transportation and easy installation whenever and wherever it is needed.



Partner:





CONTINEST® | SPACE TO GO



CN20 UT (URBAN TRAINER)

Quick deployable multi floor training buildings.

The system that allows you to rearrange buildings, so your soldiers won't train in the same city over and over again. Also possible to arrange buildings to mimic your future operational urban environment.

The system has unmatched portability and modularity. Contains features like multi floor buildings, modular elements, magnetically attached plastic windows that can be breached over and over again with no additional costs.





CN CEC – CONTINEST EXPEDITIONARY CAMP

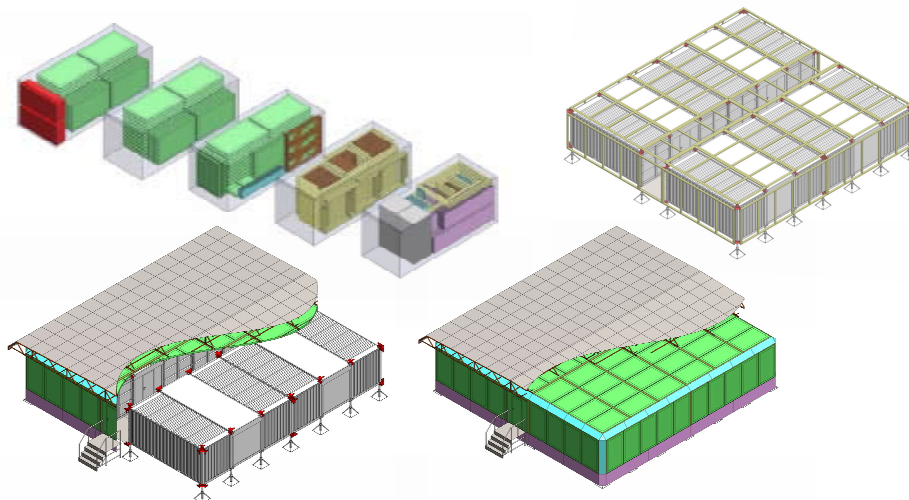
This concept was developed with the aim to provide the necessary mobility, safety and energy efficiency that is needed for any military unit that has to perform activities in distant and hostile environment. One of the main focuses of the CEC was to develop a system that can be efficiently relocated, as well brought back to its initial base once missions are over. By achieving repatriation of the CEC systems repatriation the high infrastructure costs as well the security issues of foreign missions can be significantly optimized.

The main characteristics of the CEC:

1. Build from the optimal mix of foldable and fixed frame containers, reducing the overall logistics train.
2. Multipurpose units: accommodation, office, sanitary, kitchen.
3. All systems necessary for on site operation (energy, water, protection systems) are integrated in ISO 20' containers.
4. Transportable by road, air and sea.
5. Protection against STANAG 2280 Category C4 Blast and Fragmentation protection (roof) and C3 (side) with category A3 (all over) Ballistic protection with further upgrades possible.
6. A mix of fuel cell and renewable energy sources for the safe and efficient operation of the CEC.

The adaptive protection system of the CEC is Dynacell, produced by Dynasystems UK (www.dynasystems.co.uk) and designed and certified Explora Security Ltd (www.explorasecurity.com).

The energy system is developed in cooperation with Axsol GmbH. (www.axsol.de).





CONTINEST® | SPACE TO GO



CN20 BH – BLACK HOLE R&D

- ▶ Developing the space saving container that provides 100% privacy against optical, acoustic and radio-electronic eavesdropping, in a compact foldable package. Leaves you to focus on command and control.
- ▶ The system utilises active and passive solutions, maximising both physical and data security.
- ▶ The 80 dB sound absorption, the active wallstructure and blackbox system prevents laser beam eavesdropping while the integrated jammer suppresses all transmission in the range of 100khz- 5,1 Ghz.
- ▶ The fully closed loupe breathing air system, recirculates air with actively supplied Oxygen while CO2 is chemically absorbed.
- ▶ No unintended data leaves the container.





CONTINEST® | SPACE TO GO



CONTINUED INNOVATIVE CONTAINER SOLUTIONS

MOBILE INFRASTRUCTURE FOR CONTEMPORARY MEDICAL NEEDS



Medical platforms can be applied in various defence and law enforcement areas:



- ▶ Military
- ▶ Disaster Management
- ▶ Border Police
- ▶ Police
- ▶ Refugee Management - Refugee Camps
- ▶ Aliens Policing

Continest can flexibly design medical units for specific needs in specific locations. Continest's own engineering team and medical experts support the company's platform developments.

CONTINEST PLATFORMS CAN BE USED AS:

- ▶ Multifunctional Medical Center
- ▶ Outpatient clinic
- ▶ Inpatient ward
- ▶ Field hospital
- ▶ Mobile ORs
- ▶ Vaccination & sample collection unit
- ▶ Laboratory unit and Clean room/area etc.





PARTNERS



Koninklijke Landmacht

AXSOL



Sofema



Losberger De Boer
Bachmann RDS





CONTINVEST FACTORY #1

H-8000 Székesfehérvár, Bárándi u. 13.



CONTINEST®

Space to go

CONTINEST TECHNOLOGIES Plc.
H-2000 Szentendre, Fő tér 14.

www.continest.com

Trademark No. 227509, Patent Registration No. WO 2019/064036

NCAGE code: 2054V

CN10 NATO Stock Number:
5410-51-0009513

CN20 NATO Stock Number:
5410-51-0009514