



CONTINEST®
Space to go

INNOVATIVE MOBILE CONTAINER INFRASTRUCTURE FOR TEMPORARY MEDICAL NEEDS



MOBILE | INNOVATIVE | SUSTAINABLE

CONTINEST
THE LEADING
FOLDABLE
CONTAINER
SOLUTION

www.continest.com



 CONTINUED



CONTINEO FOLDABLE MEDICAL PLATFORMS

We are facing serious global challenges such as population growth, aging, migration, urbanization climate change, pandemic, etc. These challenges causing medical capacity shortages and lack of proper healthcare accessibility to people not just in fragile but also in stable parts of the world. Mobile medical infrastructure can help to ease the pressure on governments and humanitarian organizations by providing fast, durable and modular medical solutions when and where it is needed. The environmentally friendly mobile health care solutions such as Contineo foldable medical platforms can decrease the carbon footprint and reduce storage and transport cost.

80% CO² reduction

Cost effective transport
and storage

Modular

Multifunctional

Scalable





CONTINECST® | SPACE TO GO



CONTINECST FOLDABLE CONTAINER SOLUTION

Continecst is an innovative market-leading foldable container manufacturer. The containers are uniquely developed for easy and quick set up and transport thus being environmentally friendly and sustainable. The solution offers an 80% cost cut on logistic and storage costs, and a similar reduction of CO² and GHG emissions.

Continecst container solutions are specially developed for various purposes in the fields of defence, medical, events (cultural & sports) and urban. The development and production of Continecst containers have been taking place in Hungary since 2017.

Continecst Technologies Plc. is highly committed towards environmental issues and sustainable developments. Continecst mobile medical platforms are durable, scalable and modular solutions which can be easily transported, set up and relocated in various parts of the world.





CONTINEEST® | SPACE TO GO



BASE PRODUCTS

The base products of Contineest are the CM10 (10') and CM20 (20') foldable containers. Driven by both customer demand and market development strategy a range of new products, applications and accessories have been developed and are under development:



CM10 STANDARD

Size (L x W x H):

- ▶ Closed: 3000 mm x 2440 mm x 490 mm
- ▶ Open: 3000 mm x 2440 mm x 2610 mm
- ▶ Inner height: 2420 mm
- ▶ Inner width: 2260 mm
- ▶ Inner length: 2870 mm

Weight:

- ▶ 900 kg (1 truck = 20 units)



CM20 STANDARD

Size (L x W x H):

- ▶ Closed: 6058 × 2440 × 555 mm
- ▶ Open: 6058 × 2440 × 2776 mm
- ▶ Inner height: 2504 mm
- ▶ Inner width: 2315 mm
- ▶ Inner length: 5791 mm

Weight:

- ▶ 1800 kg (1 truck = 10 units)

Trademark No.227509, Patent Registrations No. WO2019/064036,
NCAGE Code: 2054V, ISO 9001, ISO 14001



CONTINEST® | SPACE TO GO



OUR PRODUCTS

CN HYBRID

The CN Hybrid unit is the result of the cooperation of two market leaders from different industry sectors: innovative infrastructure solutions by ContiNest (H) and power storage and management by Axsol (D).

The concept of the unit is to provide the most efficient energy production and storage combination for deployed infrastructure systems regardless of the geographical and environmental conditions.

Partially to Fully Self-Sufficient Energy Supply:

- ▶ LiFePO4 battery storage: UPS, safe, durable, highly efficient, modular expandable
- ▶ bi-directional hybrid inverter with an output power of up to 30 kVA
- ▶ solar charge controller with up to 12 kWp
- ▶ PV input power
- ▶ foldable PV system with 2 kWp, setup in < 2 minutes
- ▶ modern gasoline generator with 3,7 kVA
- ▶ as back-up energy source for guaranteed power supply in any situation
- ▶ system control for UPS and efficient energy management
- ▶ automatic start / stop of the generator



CN  HYBRID





CONTINEST® | SPACE TO GO



OUR PRODUCTS

CN SANITARY (WetCell)

A CN Sanitary WetCell is equipped with a regular flush toilet, a sink and a shower. Furthermore, the CN Sanitary WetCell comes with a heater unit as well as with a tankless water heater to make sure the 24/7 warm water availability.

The WetCell can be connected to the CN10 and CN20 foldable containers units. The WetCell can be applied also as a stand-alone unit.





CONTINEST® | SPACE TO GO



IDEAL SOLUTION IN HUMANITARIAN CRISIS

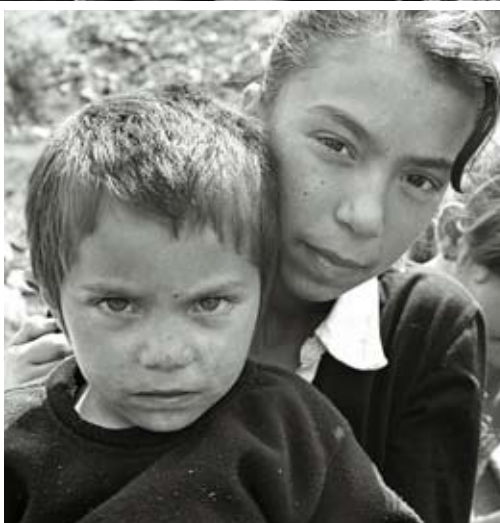


Photo: Levente Váradi



CONTINEST® | SPACE TO GO



THE CONTIMED APPROACH

Continest developed its foldable – IP protected – containers for medical purposes filling a niche for fast, durable, environmentally friendly and efficient mobile medical infrastructure. Use cases varies from capacity enhancements and accessibilities to commercial laboratories and clean-room solutions.



10-bed inpatient unit (Soroti, Republic of Uganda)

- ▶ As a modular mobile medical infrastructure platform
Continest is used for various temporary needs in the public and private segments
- ▶ Fast and easy deployment

Proven track record
with projects from
Europe, Africa
and the Middle East.





USE CASES

TEMPORARY INFRASTRUCTURE FOR VARIOUS NEEDS

ContiNest containers are stackable, easy to transport and easy to deploy. The aim is to provide temporary and/or flexible infrastructure for different use cases, as the functionality could be changed easily.

USE CASES INCLUDE

EPIDEMIC LOCAL/PANDEMIC – human and animal

- Mass testing and vaccination points
- Corporate testing
- Restart
- Traffic hubs (airports, ports, railway stations, border crossings)

MEDICAL ENHANCEMENT AND DEPLOYMENT

- Extra capacity for in and outpatient needs, isolation areas, emergency solutions, vaccination, intermediary rooms, first aid room, CT/MR unit, mobile respiratory capacities and ICU units etc.

HUMANITARIAN CRISIS

- (migration, natural and man-made disaster)

ENSURING SAFE EVENTS

- (sports, music, cultural other events – e.g religious)



Covid 19 Testing point: Gatwick International Airport
United Kingdom



TARGET GROUPS END USERS

THE END USERS OF CONTIMED COME FROM DIFFERENT AREAS,
WITH SLIGHTLY DIFFERENT NEEDS CONTIMED PLATFORMS

PUBLIC



National healthcare systems

Governmental offices

Defence + law enforcement (military, police, disaster management agencies, border police)

Education

Municipalities

PRIVATE



Healthcare service providers

Multi-event organizers

Infrastructure rental companies

Biochemical, veterinary, pharma, food, high-tech and automotive industries

NGOs



UN/WHO/UNDRR/Immigration AIDE

Red Cross/Red Crescent, Humanitarian Organizations, etc.

Foundations

CONTINEST PLATFORMS CAN BE ADOPTED TO

- ▶ Multifunctional Medical Center
- ▶ Outpatient clinic
- ▶ Inpatient ward
- ▶ Screening point
- ▶ Vaccination & sample collection unit
- ▶ Laboratory unit,
- ▶ Cleanroom
- ▶ Dental solutions etc.





CONTINEST® | SPACE TO GO



PRODUCT SOLUTION

Continest mobile medical platforms are modular and multifunctional solutions which can be easily transported, set up and relocated in various parts of the world.

Continest can flexibly design medical units for specific needs in specific locations. Continest's own engineering team and medical specialists support the company's platform developments.



Vaccination point exterior



Vaccination point interior



Inpatient ward



CONTINEST® | SPACE TO GO



BASIC LABORATORY WITH TEST AND VACCINATION UNIT

PLATFORM: BASIC MOBILE LABORATORY UNIT TEST
AND VACCINATION BASE FOR MASS PCR AND/OR LAMP TESTING
AND/OR VACCINATION.



Covid 19 Testing point, Budapest, Hungary

The units made out of the following:

- ▶ Lab-base unit
- ▶ Administration
- ▶ Sampling
- ▶ Changing rooms
- ▶ WetCell units

End users:

- ▶ Medical institutions
- ▶ Municipalities
- ▶ Refugee camps
- ▶ Disasters areas
- ▶ NGOs
- ▶ Even organizers (cultural, sport, etc.)



Magyar Máltai
Szeretetszolgálat



CONTINEST® | SPACE TO GO

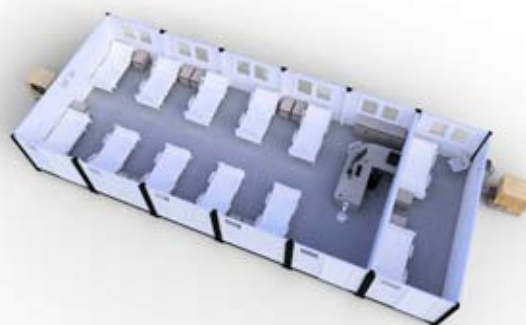


INPATIENT WARD

PLATFORM: MOBILE INPATIENT FACILITY WITH ISOLATION UNIT



WHO 10-bed inpatient ward in Soroti, Uganda



The units made out of the following:

- ▶ Inpatient
 - Hospitalization unit/Ward
- ▶ Inpatient
 - Hospitalization/Isolation Unit

End users:

- ▶ Medical institutions
- ▶ NGOs
- ▶ Governmental organizations
- ▶ Defence agencies
- ▶ Refugee camps
- ▶ Municipalities
- ▶ Disasters and reconstruction agencies





CONTINEST® | SPACE TO GO



MULTIFUNCTIONAL MEDICAL FACILITY

PLATFORM: MOBILE PLATFORM FOR HOSPITALIZATION
AND EXAMINATION USE



Example: Units: CM 20 containers



The unit made out of the following:

- ▶ Inpatient
 - Hospitalization
- ▶ Inpatient
 - Pre-Hospitalization
- ▶ Outpatient
 - Examination and Dentistry



End users:

- ▶ Medical institutions
- ▶ NGOs
- ▶ Governmental organizations
- ▶ Defence agencies
- ▶ Refugee camps
- ▶ Municipalities
- ▶ Disasters and reconstruction agencies



CONTINEST® | SPACE TO GO



BSL2/ISO 7 LABORATORY AND CLEANROOM SOLUTIONS

PLATFORM: LABORATORY SOLUTION FOR HUMAN, ANIMAL AND PLANTS.
MOBILE DEPLOYABLE CLEANROOM FOR VARIOUS CLEANROOM NEEDS
FROM BIOCHEMICAL TO FOOD AND EVEN AUTOMOTIVE USE.





The unit made out of the following:

- ▶ Lab-base unit
- ▶ Sampling
- ▶ Administration
- ▶ Changing rooms
- ▶ WetCell unit

End users:

- ▶ Medical institutions
- ▶ Biochemical needs
- ▶ Food safety institutions
- ▶ Automotive industry
- ▶ Municipalities
- ▶ Refugee camps
- ▶ Disasters areas
- ▶ NGOs
- ▶ Even organizers (cultural, sport, etc.)



CONTINEST® | SPACE TO GO



MEDICAL TREATMENT FACILITY

PLATFORM: MOBILE AND MODULAR WARD
FOR CASES OF CAPACITY SHORTAGE



Example: Units: 12 CN20, 1 WetCell, Logistics: 2 truck



The unit could be made out of the following:

- ▶ Outpatient unit
- ▶ Operating room
- ▶ Inpatient ward
- ▶ Changing rooms
- ▶ WetCell units
- ▶ Accommodation for medical staff
- ▶ Triage

End users:

- ▶ Medical institutions
- ▶ NGOs
- ▶ Governmental organizations
- ▶ Defence agencies
- ▶ Refugee camps
- ▶ Municipalities
- ▶ Disasters and reconstruction agencies



CONTINEST® | SPACE TO GO



MOBILE OUTPATIENT UNIT

PLATFORM: MOBILE AND MODULAR OUTPATIENT
UNIT FOR CASES OF CAPACITY SHORTAGES



Ramsgate Airport, United Kingdom



The units made out of the following:

- ▶ Examination rooms
- ▶ Lobby
- ▶ Administration
- ▶ WetCell units



End users:

- ▶ Medical institutions
- ▶ NGOs
- ▶ Governmental organizations
- ▶ Defence agencies
- ▶ Refugee camps
- ▶ Municipalities
- ▶ Disaster and reconstruction agencies

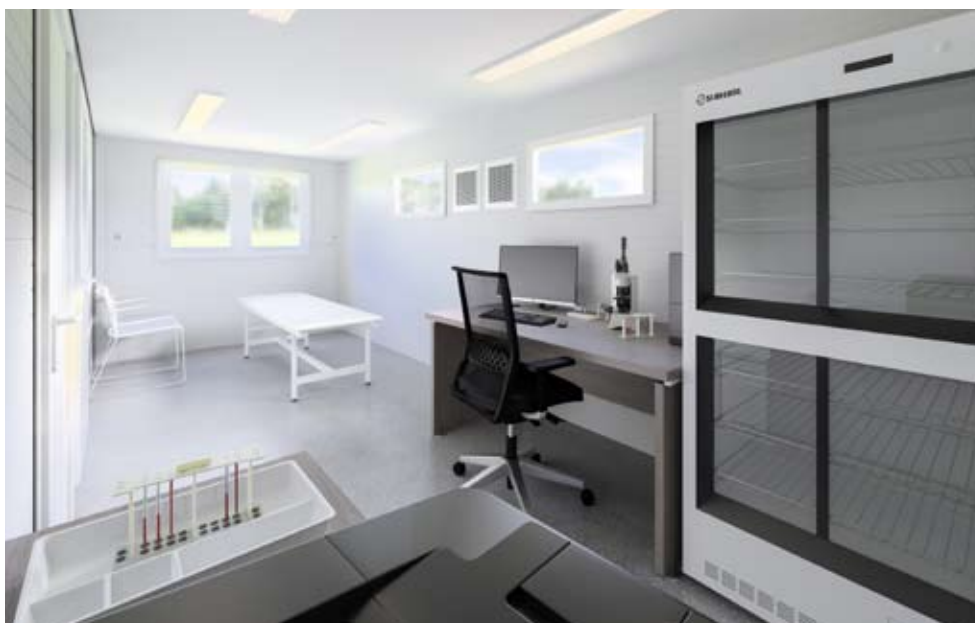


CONTINEST® | SPACE TO GO



MOBILE DOPING STATION

PLATFORM: MOBILE AND MODULAR DOPING SAMPLING STATION

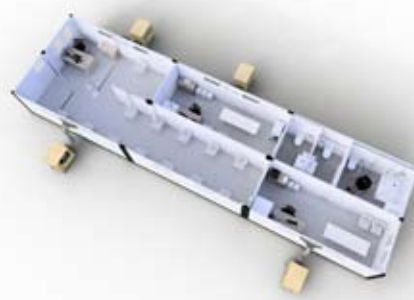


Example: Units 2 CM20, 1 CM10, 1 WetCell, **Logistics:** 1 truck



The units made out of the following:

- ▶ Blood sampling room
- ▶ Lobby and Administration
- ▶ Sanitary room & sampling unit



End users:

- ▶ National Sport Associations
- ▶ International Sport Associations
- ▶ National Olympic Committee
- ▶ International Olympic Committee
- ▶ etc.

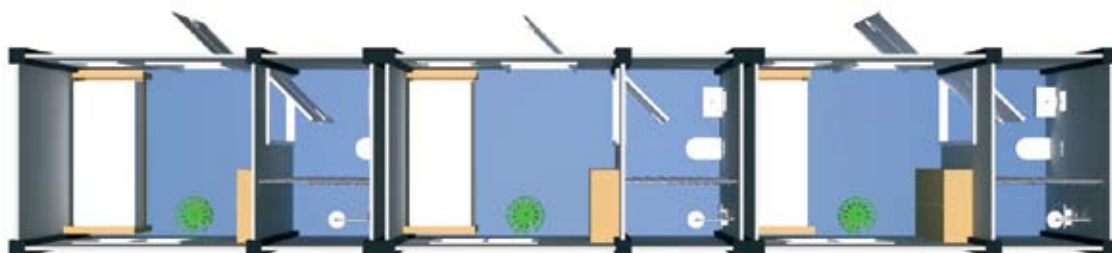


CONTINEST® | SPACE TO GO



MOBIL HOUSING BLOCKS FOR MEDICAL STAFF

PLATFORM: MOBILE AND MODULAR HOUSING
BLOCKS DESIGNED FOR MEDICAL STAFF



Example: Units 3 CM10, 3 WetCell, **Logistics:** 1 truck



Accommodation unit and WetCell

The unit could be made
out of the following:

- ▶ Accommodation unit
- ▶ WetCell units

End users:

- ▶ Medical institutions
- ▶ NGOs
- ▶ Governmental organizations
- ▶ Defence agencies
- ▶ Refugee camps
- ▶ Municipalities
- ▶ Disaster and reconstruction agencies



CONTINEST® | SPACE TO GO



OTHER PLATFORMS

PLATFORM: VARIOUS MOBILE MEDICAL
PLATFORMS FOR CASES OF CAPACITY SHORTAGES



Solutions:

- ▶ Hybrid Mobile Hospital
- ▶ Mobile operating room
- ▶ Mobile screening unit
- ▶ Mobile ICU
- ▶ Vaccination station and vaccination hub
- ▶ Testing station

End users:

- ▶ Medical institutions
- ▶ Municipalities
- ▶ Corporations
- ▶ Refugee camps
- ▶ Disaster areas
- ▶ NGOs



MEDICAL SUPPLEMENTS

IN ORDER TO PROVIDE COMPLEX SERVICES TOGETHER WITH OUR PARTNERS WE CAN ADD MEDICAL INSTRUMENTS FITTED TO OUR MOBILE PLATFORMS.

LAMP TESTING



Fast Covid 19 test results within 40 mins.

Advantages of the technology: This test is unique in its use of highly specific primers in a LAMP (Loop-mediated Isothermal Amplification) analysis to detect the presence of SARS-CoV-2 virus both in human samples and on surfaces within 30-45 minutes and at very high levels of sensitivity and accuracy.

DISINFECTING GATE



Thermometer

A quick and simple reading on the forehead to check if the person has a temperature that indicates a potentially infectious disease.

Hand sanitiser

Automated hand sanitiser to clean peoples' hand of germs and bacteria that might be left on their skin using public infrastructure.

Disinfection of clothes & bag

A fine mist of disinfectant complements the hand sanitising process to clean the clothes, bags and shoes of the person entering.

UV SANITIZER



An eco-friendly, easy-to-use sanitizer featuring rapid disinfection time. Eradicate 99.99% of bacteria, viruses and spores in 5 minutes. This efficient, easy-to-use, affordable unit is an essential disinfection system that eliminates 99,99% of bacteria and viruses safe and clean, with no chemicals. You put in tablets, cell phones, keypads, TV remotes, small tools, any object and with a one-click start full disinfection is achieved in minutes.



ALTERNATIVE SOLUTIONS USP

Currently there are multiple solutions to perform temporary medical infrastructure but there are either logistic, financial or other drawbacks of these alternatives.



Event halls



Fixed frame containers



Mobile trailers



Tents



REASONS FOR CONTINUED CONTAINER USAGE IN THE HEALTHCARE SECTOR

Durability Not subjected to any environmental factors:
wind, dust, rain, hurricane, snow, ice, etc.

Scalability Can easily be adjusted to clients' needs (size, form, capacity, interior), adaptable to different capacity requirements

Modularity Due to its modular solution, easily tailored to individual needs, adaptable to different capacity requirements

Rapidity Deployment and set up is fast (3 hours), rapid site design and production is tailored to clients' needs.

Mobility Easy and cost effective to transport **since they are foldable** – installation and dismantle are simple.

Efficiency Folded containers are easy and inexpensive to store, transport and setup **(up to 80% savings in transportation and storage)**.

Stability Very stable structures and they are not subjected to **environment or hygienic risks**.

Usability While tents, halls or trailers can be used and utilized to limited cases containers **can flexibly be used in various industry segments from low to high safety and comfort levels**. ContiNest solutions are capable to meet the highest medical requirements: **up to BSL4 BIOSAFETY LEVEL OR INTENSIVE CARE UNIT (ICU)**.

Comfort The levels of comfort vary and can be **adjusted to different circumstances**.



ADVANTAGES OF CONTINEST MEDICAL INFRASTRUCTURE

Fast deployment | Effective storage solution | Modularity | Re-usability
Durability | Scalability | Sustainable & Ecological

CONTACT

Krisztián DALLOS

Medical Division Director

k.dallos@continest.com

+36 30 018 9933

Vidor KIS-MARTON

CEO Continest Technologies Plc.

v.kismarton@continest.com

+36 70 296 5238



Trademark No. 227509, Patent Registration No. WO 2019/064036

NCAGE code: 2054V

CN10 NATO Stock Number: 5410-51-0009513

CN20 NATO Stock Number: 5410-51-0009514



Continvest Factory#1 H-8000 Székesfehérvár, Bárándi St. 13.



CONTINEST®
—
Space to go
—

CONTINEST TECHNOLOGIES Plc.
H-2000 Szentendre, Fő tér 14.

www.continest.com